



Treble Clef Notes

www.musictechteacher.com

A musical staff in 4/4 time showing the treble clef scale from A to F. The notes are: A (quarter), B (quarter), C (quarter), D (quarter), E (quarter), F (quarter), G (quarter), A (quarter), B (quarter), C (quarter), D (quarter), E (quarter), F (quarter), G (quarter), A (quarter), B (quarter), C (quarter), D (quarter), E (quarter), F (quarter).

Lines on the Staff

Spaces on the Staff

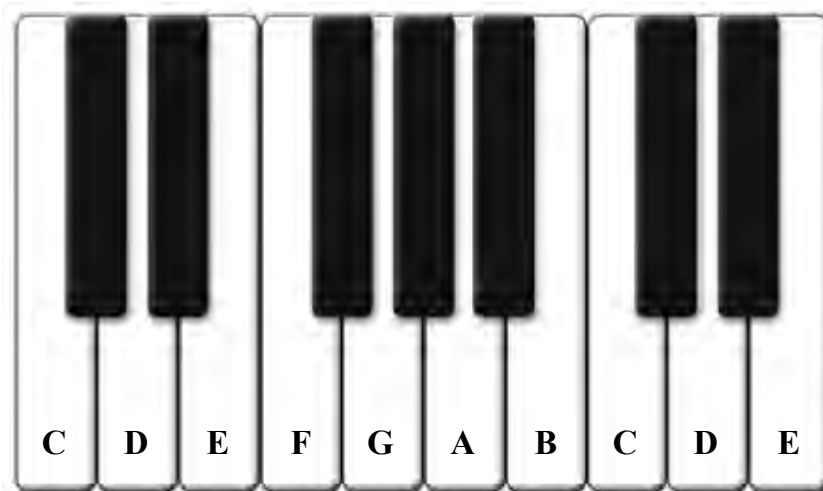
A musical staff illustrating notes on lines and spaces. The notes are: E (line 1), G (space 2), B (line 3), D (space 4), F (line 5), F (space 1), A (space 2), C (space 3), E (space 4).

Ledger Lines - Notes Below the Staff

A musical staff showing notes F, G, A, B, C, D on ledger lines below the staff. F is on the first ledger line below, G on the second, A on the third, B on the fourth, C on the fifth, and D on the sixth.

Ledger Lines - Notes Above the Staff

A musical staff showing notes G, A, B, C, D, E, F on ledger lines above the staff. G is on the first ledger line above, A on the second, B on the third, C on the fourth, D on the fifth, E on the sixth, and F on the seventh.



Grand Staff and Ledger Lines

www.musictechteacher.com

Name _____

Date _____



This is a Grand Staff. The Treble Clef and Bass Clef Staves are connected by a bracket or brace.

Notes written above or below the staff are written on short lines called Ledger Lines or Leger Lines. These lines extend the staff higher or lower.

Write the note names for each note in the blanks:

Write half notes on ledger lines above or below the staves for each note listed:

Notes below the staff

Notes above the staff

D B C A A C B D

D E B C E D F C

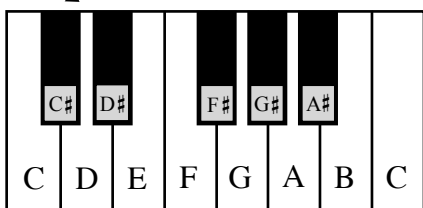
Notes below the staff

Notes above the staff

Sharps and Flats I

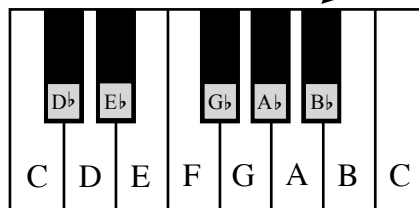
A **sharp** sign (#) placed in front of a note (#)
raises its pitch a half step.

C# is 1/2 step higher than C



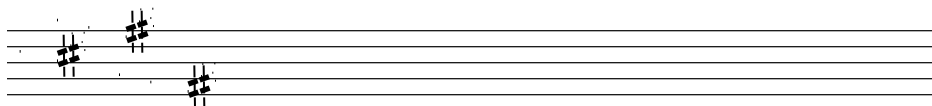
A **flat** sign (b) placed in front of a note (b)
lowers its pitch a half step.

Bb is 1/2 step lower than B

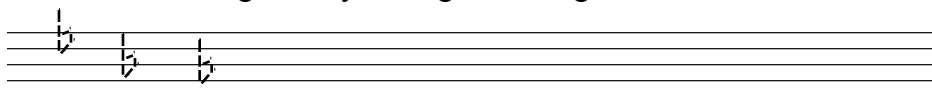


It is easy to see, on the piano keyboard, how the black keys to the right (1/2 step higher) of a note are sharps and the black keys to the left (1/2 step lower) of a note are flats.

1. Practice drawing sharps by tracing over the guidelines. Draw six more in the remaining space.



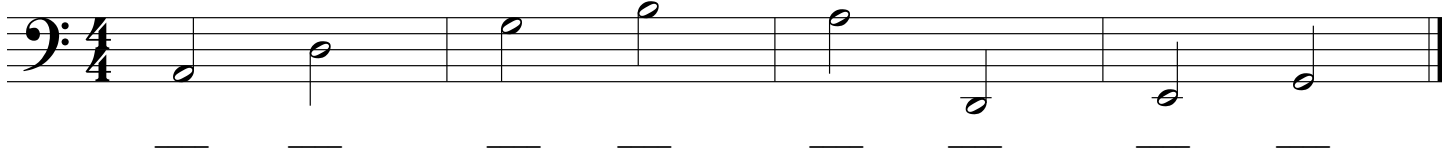
2. Practice drawing flats by tracing over the guidelines. Draw six more in the remaining space.



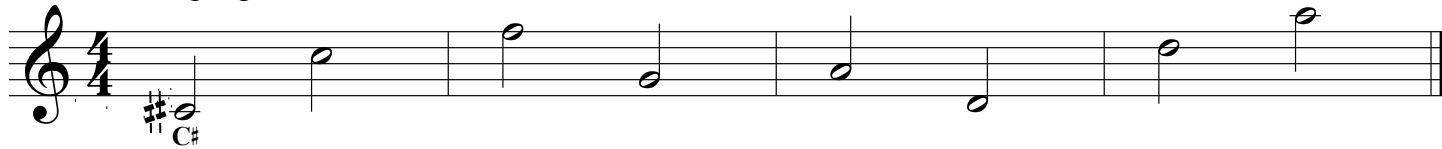
3. Write a flat sign in front of each note and then name the note.



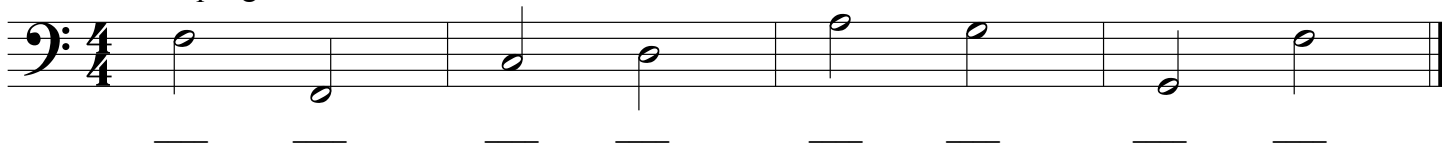
4. Write a flat sign in front of each note and then name the note.



5. Write a sharp sign in front of each note and then name the note.



6. Write a sharp sign in front of each note and then name the note.



Name _____

Note Names Practice Quiz

Choose the Clef you wish to work with, treble or bass. DRAW the clef on the left end of each staff. Then WRITE the names of each note underneath.



Note that we place a sharp, flat, or natural BEFORE the note on the staff, but when writing or speaking we use "C#", "Bb". etc.

So that's the way you will write the note names in the exercise above.